



Auto Ref/  
Keratometers

Digital  
Refractors

Exam Lanes  
& Furniture

Slit Lamps

Lensmeters

Acuity  
Charts

Retinal  
Cameras

INTRODUCING THE NEW

# NON-MYDRIATIC RETINAL CAMERA

SK-650A



BUILT WITH KEY FEATURES INCLUDING:

**SPLIT ALIGNING FOCUS**

**ANTERIOR/POSTERIOR  
PARA POSITION**

**COMPENSATION LENS  
SWITCH**

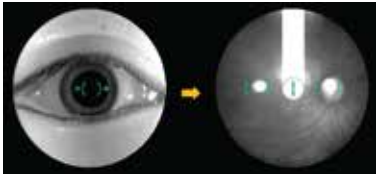
**OPTICAL RED-FREE FILTER**

**SEAMLESS AUTO-MOSAIC**



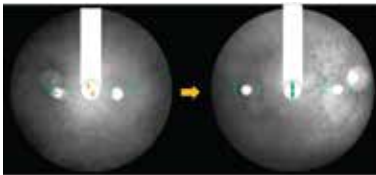
## SK-650A

NON-MYDRIATIC RETINAL CAMERA



### Split-line aligning focus

Objective indication of alignment status



### Switching Anterior-Posterior Para-position

Para-position fundus easily



### Red-Free

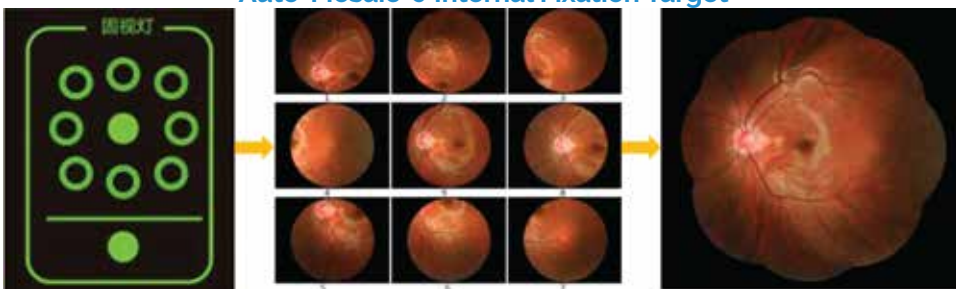
Obvious comparison of nerve fiber layers  
Helps diagnose glaucoma



### Full 45° Image Capture

New optical design guarantees full 45° image capture to avoid losing fundus information

### Auto-Mosaic+9 Internal Fixation Target



## SPECIFICATIONS

|  |  |
|--|--|
| <b>Optical Lens Type</b>                           | Non-Aspherics System   |
| <b>Test Mode</b>                                   | Non-Mydriatic Fundus   |
| <b>Fundus Observations</b>                         | Switching Anterior/Posterior Para-position   |
| <b>Focus</b>                                       | Split-line aligning focusing   |
| <b>Fundus observation para-position indication</b> | Dots Overlap   |
| <b>Digital Camera</b>                              | Canon EOS Technology   |
| <b>Color image capture</b>                         | 5184 x 3456  |
| <b>Min. Pupil Size</b>                             | 3.3mm  |
| <b>Compensation Range</b>                          | -25D to approx. +30D   |
| <b>Fixation</b>                                    | 9 internal fixation targets  |
| <b>Max viewing angle</b>                           | 45°  |
| <b>Working distance</b>                            | 40mm ±2mm  |
| <b>Software Supported</b>                          | DICOM3.0, Hospital HIS/PACS System, Fundus Mosaic, Image Processing, Measurement, Patient Profile Management |



DIAGNOSTICS



SURFACING



COATING



FINISHING



CONSUMABLES



SERVICE

